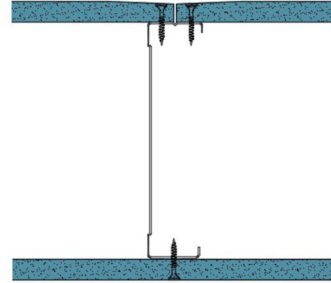


146-B-53 - SPEEDLINE System Data Sheet - Version V1 (24-10-23)

SPEEDLINE 146mm 'C' Stud Partition @600mm Ctrs, with BG Gyproc 12.5mm SoundBloc each side



System Performance Breakdown

Fire Resistance:

BS476 Part 22:1987:

Test Ref & Date or Applied Ref & Report:

Max Height:

Thickness:

Duty Grade: BS 5234: Part 2:1992:

Sound Insulation:

30/30 Minutes (Integrity/Insulation).

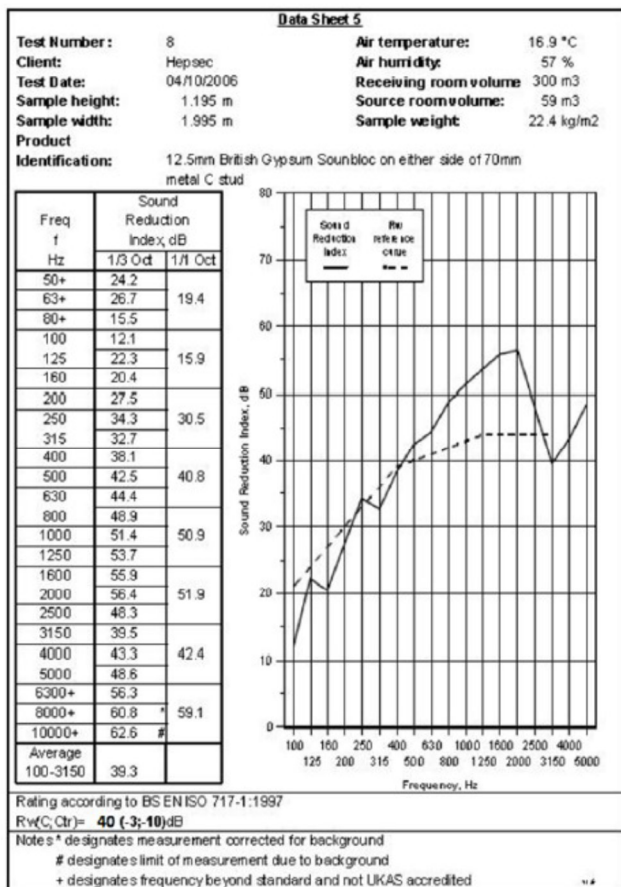
BTC 17439F - BRE Report P102396-1011A

Refer to Speedline Specification Clause

173 mm. (At Base Track, Excluding Finishes)

Medium - Annexes A-F

40 R_wdB, Date Tested or Assessed Against - 70-B-53



TESTED AT ONE OF THE UKAS ACCREDITED LABORATORIES BELOW

| | |
|---------------------------|--|
| B.T.C (H-Ref on Graph) | |
| B.R.E | |
| AIRO | |
| S.R.L | |

SPEEDLINE Drywall Systems, Adsetts House, 16 Europa View, Sheffield Business Park, Sheffield, S9 1XH.

Tel: 0114 231 8030.

Email: enquiries@speedlinedrywall.co.uk

(As per the requirements set out in ISO/IEC 17025:2017 regarding test data the results stated have been carried out by voestalpine Metsec plc as part of the contract to supply Speedline Metal Sections to SIG Plc)